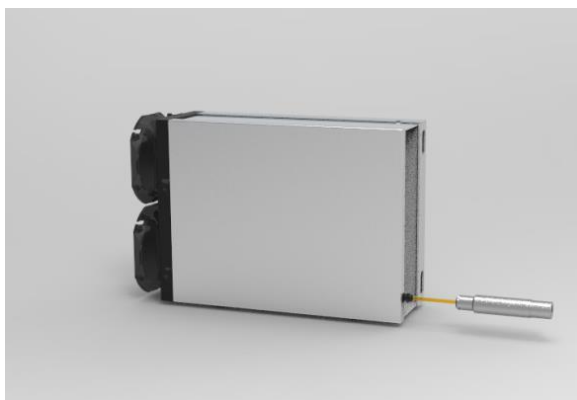


Air Cooling Fiber Laser

BFL-ACW15S



FEATURES:

- ◆ Cost effective and maintenance free
- ◆ Excellent power stability
- ◆ Excellent system reliability
- ◆ Easy-to-use control

APPLICATION:

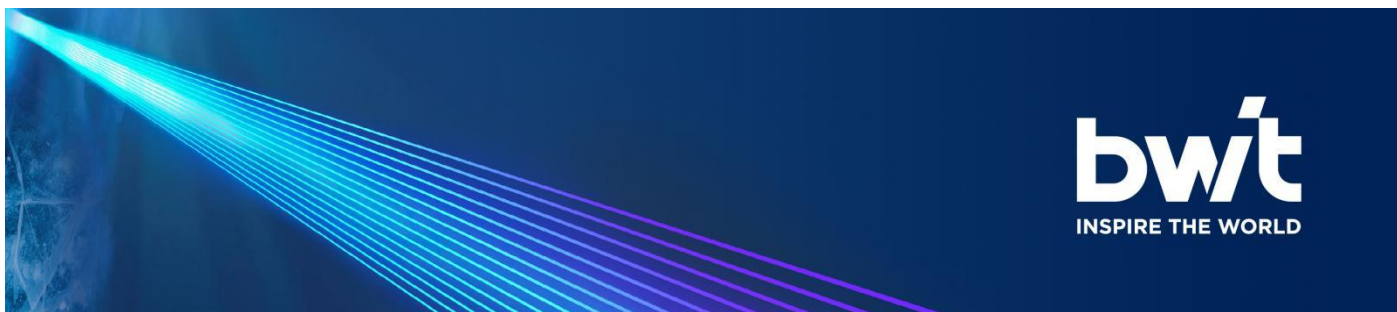
- ◆ Precision welding
- ◆ Handheld welding
- ◆ Sheet metal processing

BWT air cooling fiber lasers use a new heat dissipation method and powerful fans to achieve better stability. Simple appearance provides much design room for laser machine integration.

Air cooling fiber lasers have excellent beam quality, and the beam can be focused close to the diffraction limit, which makes them perfect choices for precision processing. The two operation modes, CW and modulation, minimize heat-affected zone. Reliable performance, modular and all-fiber design, and robust case enclosing all optical and electronic components.

Air cooling fiber lasers can be used in wide application like precision processing, 3D printing, sheet metal processing, lithium-ion battery manufacturing, etc. The lasers can process various types of metal, including aluminum-based and nickel-based alloys, titanium alloys and alumina ceramics.

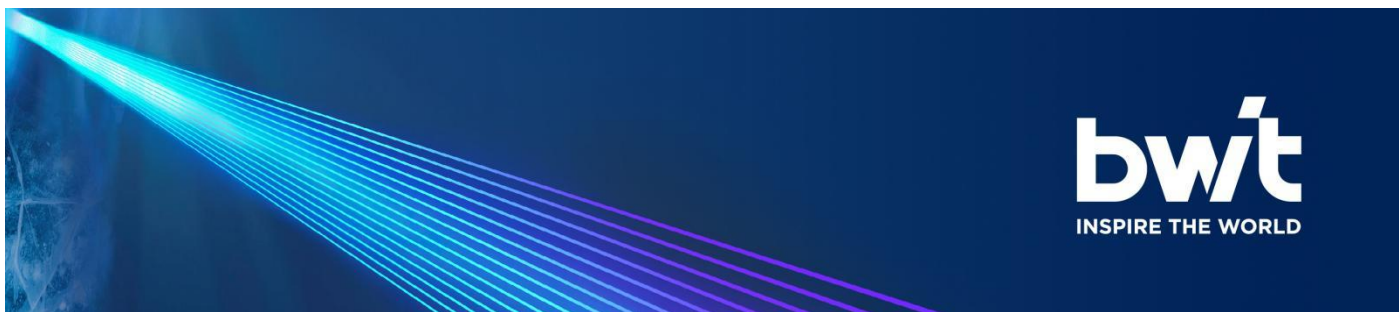
BWT professional laser application team, with good knowledge and experience, provides the best laser system solution for our customers all around the world.



Air Cooling Fiber Laser

BFL-ACW15S

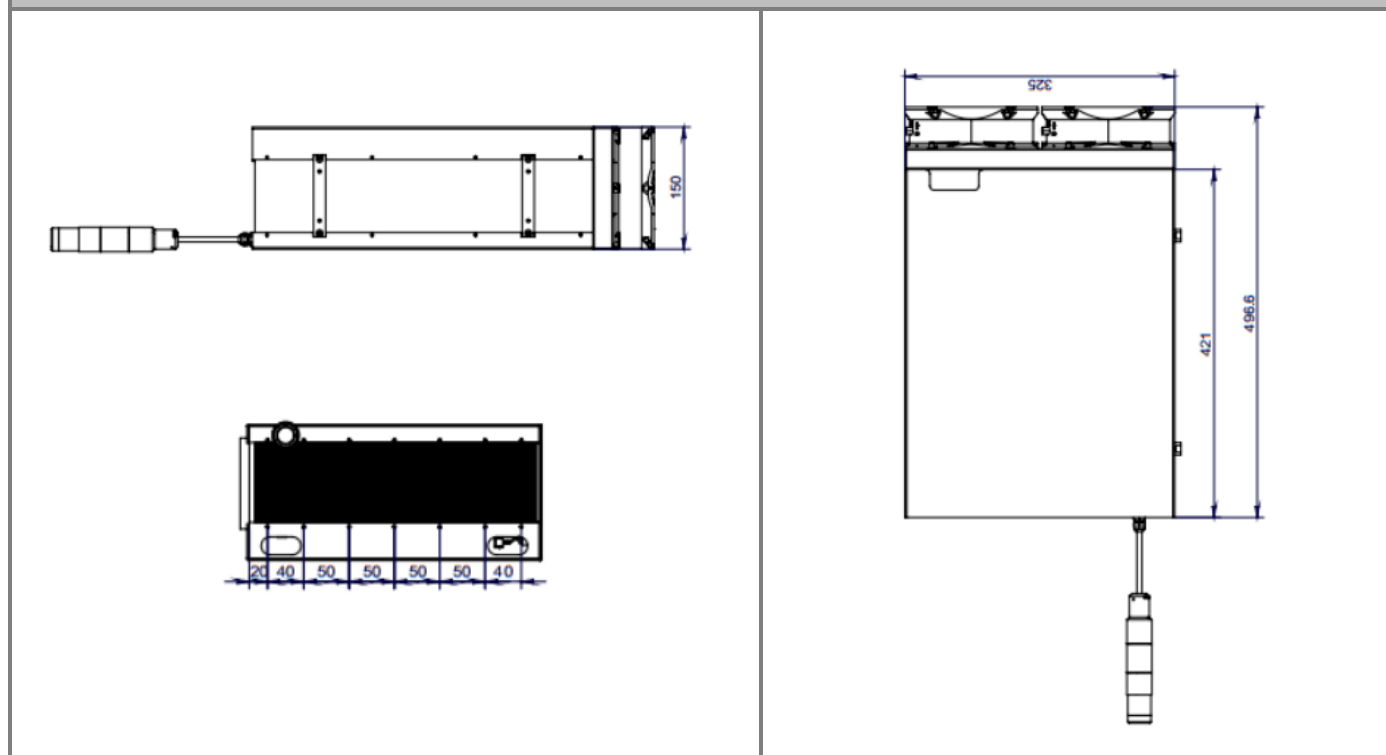
| Optical Character | |
|----------------------------|---|
| Power@25°C | 1200W |
| Wavelength | 1080±10 nm |
| Output Fiber Core Diameter | 20 μm |
| Output Cable Length | 8 m or customized |
| Output Cable Connector | QBH or QCS |
| Aiming Beam | Red |
| Operation Mode | CW or modulation |
| Polarization | Random |
| Power Stability (25°C) | <3% (2h) |
| Power Adjustment Scope | 10%-100% |
| Max Modulation Frequency | 5kHz |
| Size and Weight | |
| Physical Size (H×W×D) | Laser 150mm*325mm*496.6mm, power supply module 43mm*130mm*400mm |
| Weight | Laser 16kg, power supply module 3kg |
| Electronic Character | |
| Power Supply | Single Phase, 220±20 V, AC, PE, 50/60 Hz |
| Power Consumption | 5.0 kW |
| Control Interface | RS232/AD |
| Air Cooling Parameters | |
| QBH Cooling Gas | N ₂ or Ar |
| QBH Gas Flow Rate | ≥10 L/min |
| Operation Conditions | |
| Operation Temperature | -10-40°C |
| Operation RH | 10-90% |
| Storage Temperature | -20-60°C |



Air Cooling Fiber Laser

BFL-ACW15S

DEMINSIONS (mm)



Declaration: information and specifications contained herein are deemed to be reliable and accurate. BWT Tianjin reserves the right to change, alter or modify the design and specifications of these products at any time without notice.