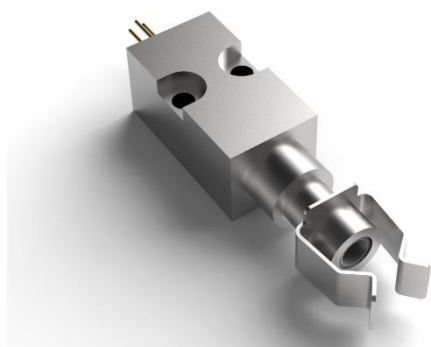




405nm 160mW Fiber Coupled Diode Laser

K405E03CN-0.160W (Standard Product)



Features:

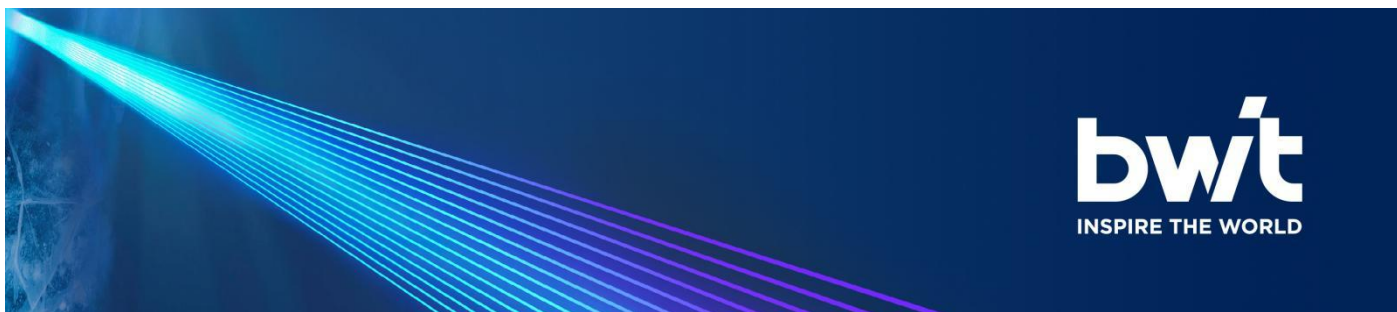
- ♦ 405nm wavelength
- ♦ 160mW output power
- ♦ 40µm fiber core diameter
- ♦ 0.22 NA

Applications:

- ♦ CTP/CTS
- ♦ Scientific Research

BWT, founded in 2003, is committed to the mission of "let the dream drive the light", the vision of becoming the "Global leader in laser solutions", and the value of "Outstanding innovation", providing diode laser, fiber laser, ultra-fast laser products and solutions to global customers.

BWT pursues continuous innovation and insists on autonomous and controllable advanced process and technology. With Beijing headquarters as the core, BWT has successively established production and R&D centers in Jiangsu, and Shenzhen, and Invested in the construction of an automated and intelligent production base in Tianjin. To build a high level of technical strength and product quality, BWT set up a German subsidiary in 2020, and taking a solid step for the internationalization of R&D, production and technological innovation.



405nm 160mW Fiber Coupled Diode Laser

K405E03CN-0.160W (Standard Product)

Specifications (25°C)		Symbol	Unit	K405E03CN-0.160W		
				Minimum	Typical	Maximum
Optical Data ⁽¹⁾	CW Output Power	P _o	mW	160	-	-
	Center Wavelength	λ _c	nm	405±5		
	Spectral Width(FWHM)	Δλ	nm	-	4	-
	Wavelength Shift with Temperature	Δλ/ΔT	nm/°C	-	0.3	-
Electrical Data	Electrical-to-Optical Efficiency	PE	%	20	-	-
	Threshold Current	I _{th}	mA	-	30	-
	Operating Current	I _{op}	mA	-	-	150
	Operating Voltage	V _{op}	V	-	-	5.5
	Slope Efficiency	η	W/A	-	1.4	-
Fiber Data	Core Diameter	D _{core}	μm	-	40	-
	Numeric Aperture	NA	-	-	0.22	-
	Fiber Termination	-	-	FC-Ferrule		
Others	ESD	V _{esd}	V	-	-	500
	Storage Temperature ⁽²⁾	T _{st}	°C	-20	-	70
	Lead Soldering Temp	T _{ls}	°C	-	-	260
	Lead Soldering Time	t	sec	-	-	10
	Operating Case Temperature ⁽³⁾	T _{op}	°C	15	-	35
	Relative Humidity	RH	%	15	-	75

(1) Data measured under operation output at 160mW@25°C.

(2) A non-condensing environment is required for operation and storage.

(3) Operating temperature defined by the package case. Acceptable operating range is 15°C~35°C, but performance may vary.



405nm 160mW Fiber Coupled Diode Laser K405E03CN-0.160W (Standard Product)

Package Dimensions (mm)

Pin	Function
1	LD (+)
2	Case
3	LD (-)

- ### OPERATING NOTES

 - ◆ Avoid eye and skin exposure to direct radiation during operation.
 - ◆ ESD precautions must be taken during storage, transportation and operation.
 - ◆ Short-circuit is required between pins during storage and transportation.

to the middle of the pins. Soldering temperature should be lower than 260℃ and time shorter than 10 second.

cutting the fiber.

 - ◆ Laser diode must work with good cooling.
 - ◆ Operation temperature ranges from 15℃ to 35℃ .
 - ◆ Storage temperature ranges from -20℃ to +70℃.



Declaration: information and specifications contained herein are deemed to be reliable and accurate. BWT Beijing Ltd.reserves the right to change, alter or modify the design and specifications of these products at any time without notice.